

Parts Catalog



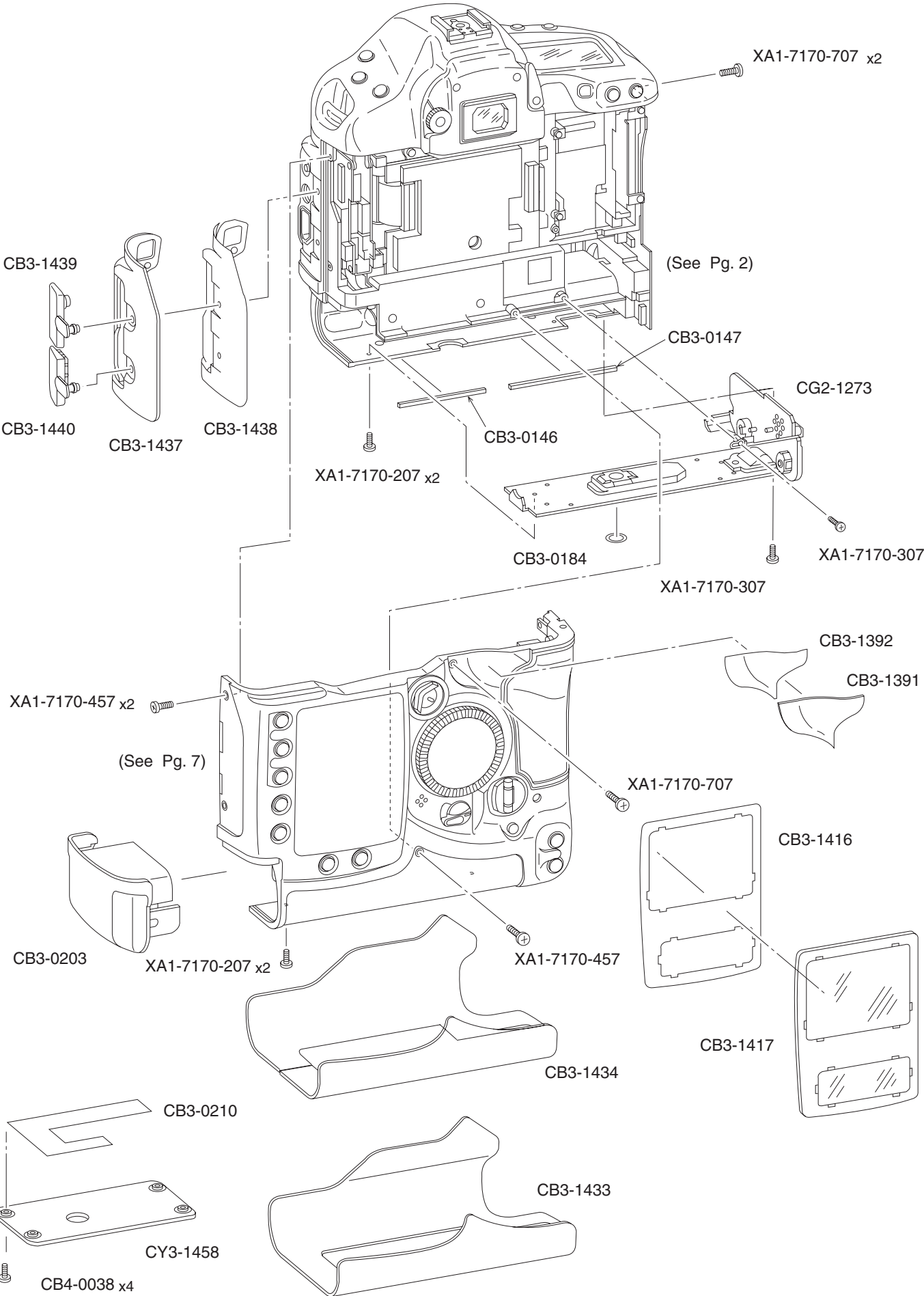
EOS-1D Mark II

REF.NO.C12-6051

| | |
|----------------------------|------------|
| Ni-MH PACK NP-E3 | C50-8041,2 |
| WIDE STRAP L5 | C56-1734 |
| INTERFACE CABLE IFC-200D4 | C50-8083 |
| INTERFACE CABLE IFC-400PCU | C84-1245 |
| DC COUPLER KIT DCK-E1 | C50-8051 |
| VIDEO CABLE VC-100 | FH6-3922 |

PARTS CATALOG

CANON DIGITAL CAMERA EOS-1D MARK II



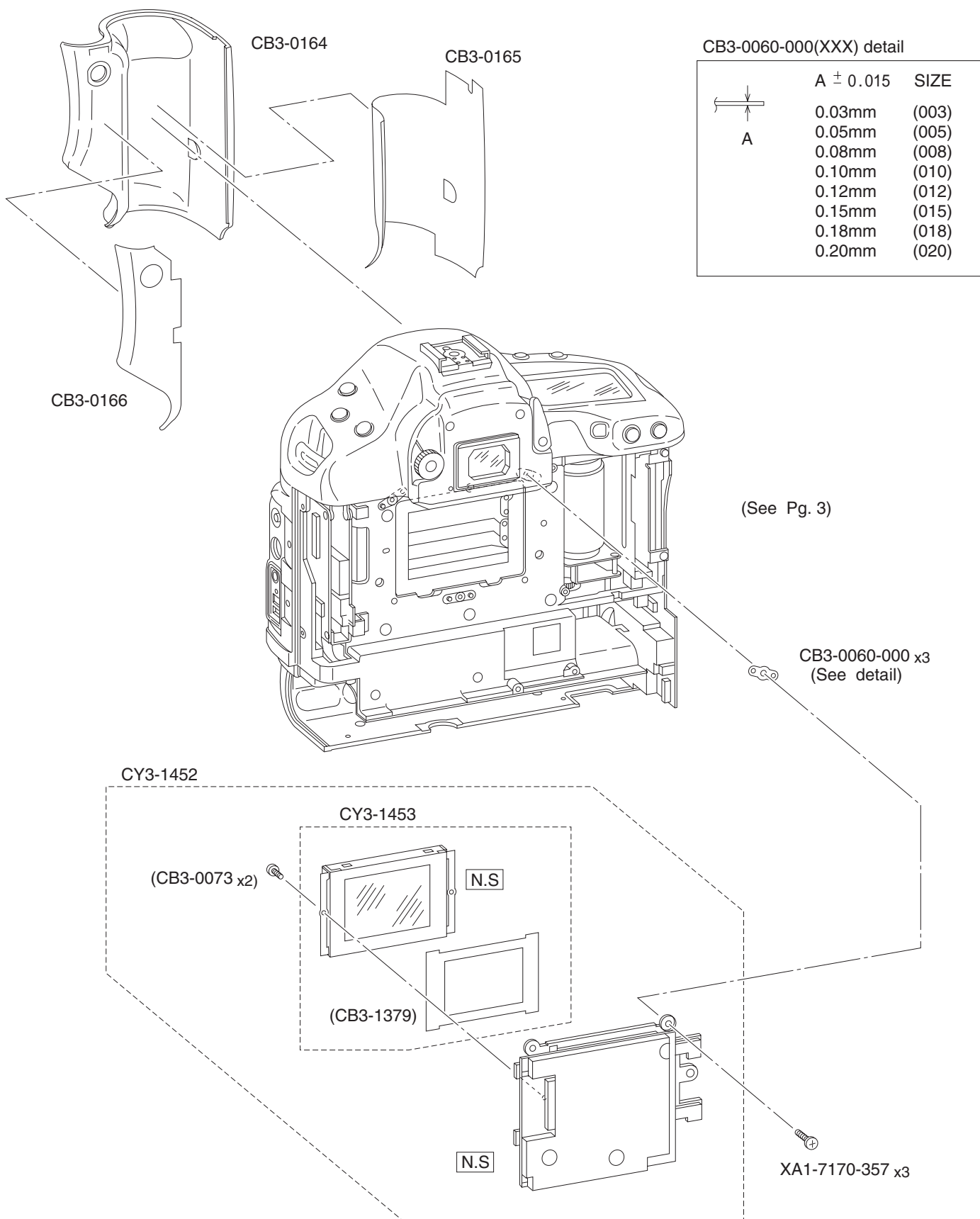
PARTS LIST

REF.NO.C12-6051

PG1

| NEW | PARTS No. | CLASS | QTY | DESCRIPTION |
|-----|--------------|-------|-----|-----------------------------|
| | CB3-0146-000 | A | 1 | SEAL, BACK BOTTOM-TR |
| | CB3-0147-000 | A | 1 | SEAL, BACK BOTTOM-GR |
| | CB3-0184-000 | A | 1 | SEAL, O RING TRIPOD |
| | CB3-0203-000 | C | 1 | CAP, BATTERY |
| | CB3-0210-000 | C | 1 | TAPE, DOUBLE SIDE (TRIPOD) |
| * | CB3-1391-000 | B | 1 | COVERING, BACK |
| * | CB3-1392-000 | B | 1 | TAPE, DOUBLE SIDE 3 (BACK) |
| * | CB3-1416-000 | C | 1 | TAPE, TFT DOUBLE SIDE |
| * | CB3-1417-000 | B | 1 | WINDOW, TFT |
| * | CB3-1433-000 | B | 1 | COVERING, BOTTOM |
| * | CB3-1434-000 | B | 1 | TAPE, DOUBLE SIDE (BOTTOM1) |
| * | CB3-1437-000 | B | 1 | COVERING, FRONT |
| * | CB3-1438-000 | B | 1 | TAPE, DOUBLE SIDE (FRONT) |
| * | CB3-1439-000 | C | 1 | CAP, PC-REMOTE |
| * | CB3-1440-000 | C | 1 | CAP, TERMINAL |
| | CB4-0038-000 | C | 4 | SCREW, CROSS-RECESS, PH |
| * | CG2-1273-000 | B | 1 | B-CONT HOLDER UNIT |
| * | CY3-1458-000 | C | 1 | PLATE, NAME |
| | XA1-7170-207 | F | 4 | SCREW, CROSS-RECESS, PH |
| | XA1-7170-307 | F | 2 | SCREW, CROSS-RECESS, PH |
| | XA1-7170-457 | F | 3 | SCREW, CROSS-RECESS, PH |
| | XA1-7170-707 | F | 3 | SCREW, CROSS-RECESS, PH |

CANON DIGITAL CAMERA EOS-1D MARK II



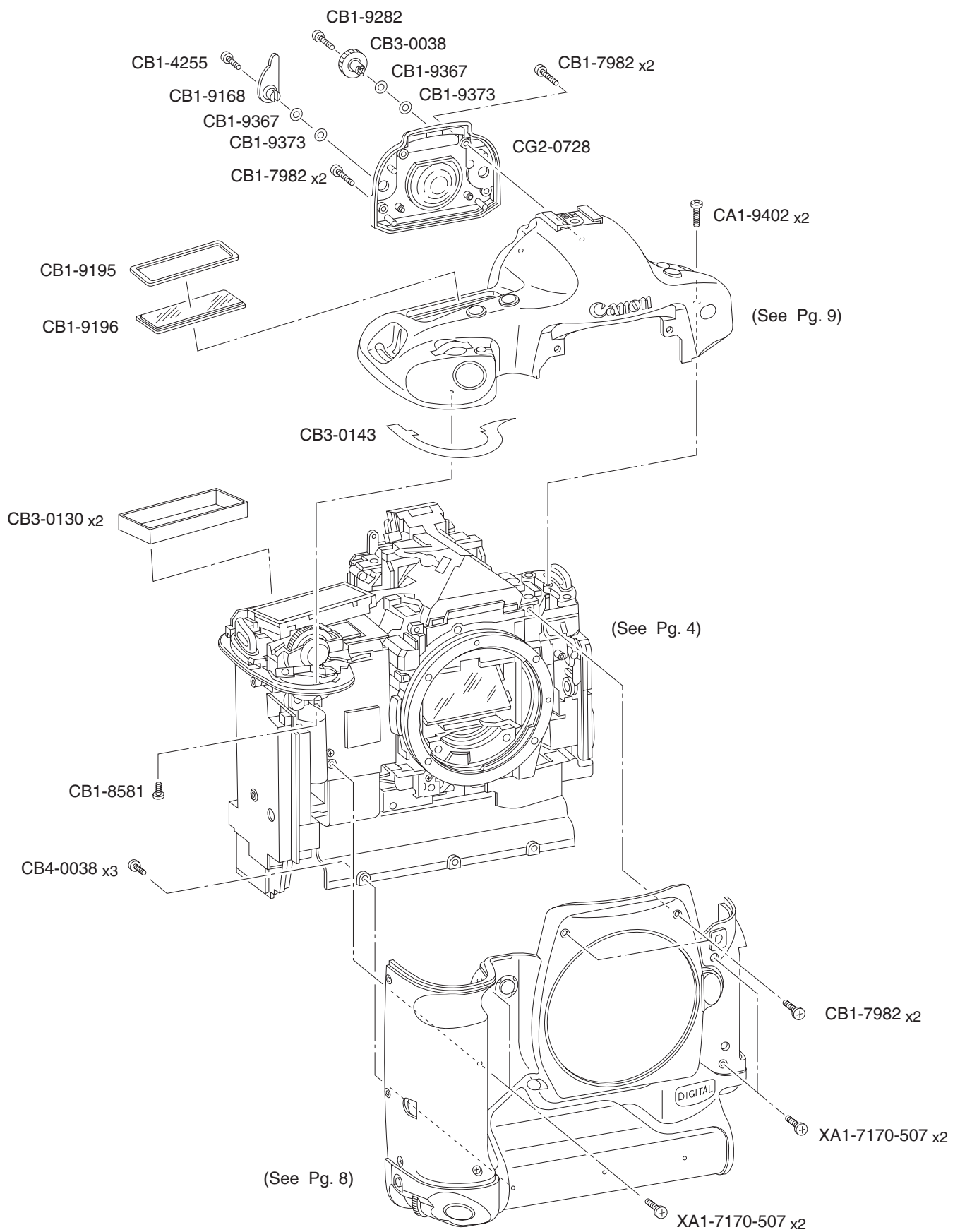
PARTS LIST

REF.NO.C12-6051

PG2

| NEW | PARTS No. | CLASS | QTY | DESCRIPTION |
|-----|--------------------|-------|-----|-------------------------|
| | CB3-0060-000 (XXX) | C | 3 | WASHER, FLANGE BACK |
| | CB3-0073-000 | C | 2 | SCREW, CROSS-RECESS, PH |
| | CB3-0164-000 | B | 1 | COVERING, GRIP |
| | CB3-0165-000 | B | 1 | TAPE, DOUBLE SIDE1 GRIP |
| | CB3-0166-000 | B | 1 | TAPE, DOUBLE SIDE2 GRIP |
| * | CB3-1379-000 | B | 1 | SHEET, LOW PASS FILTER |
| * | CY3-1452-000 | B | 1 | PCB ASS'Y, IMAGE |
| * | CY3-1453-000 | B | 1 | FILTER ASS'Y, LOW PASS |
| | XA1-7170-357 | F | 3 | SCREW, CROSS-RECESS, PH |

CANON DIGITAL CAMERA EOS-1D MARK II



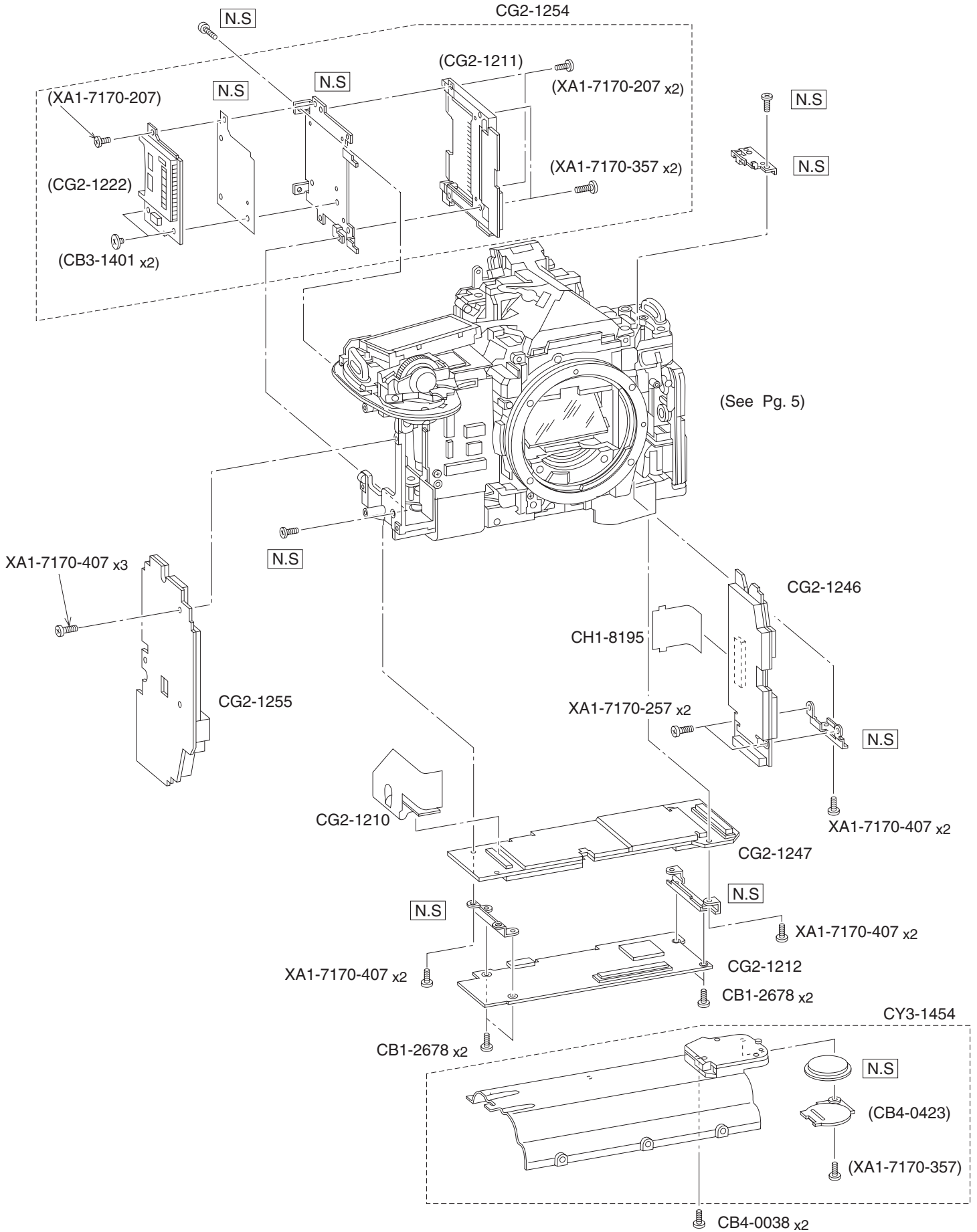
PARTS LIST

REF.NO.C12-6051

PG3

| NEW | PARTS No. | CLASS | QTY | DESCRIPTION |
|-----|--------------|-------|-----|--------------------------|
| | CA1-9402-000 | C | 2 | SCREW, CROSS-RECESS, PH |
| | CB1-4255-000 | C | 1 | SCREW, CROSS-RECESS, PH |
| | CB1-7982-000 | C | 6 | SCREW, CROSS-RECESS, PH |
| | CB1-8581-000 | C | 1 | SCREW, CROSS-RECESS, PH |
| | CB1-9168-000 | C | 1 | EYEPIECE SH LEVER |
| | CB1-9195-000 | C | 1 | MASK, OLC |
| | CB1-9196-000 | C | 1 | WINDOW, OLC |
| | CB1-9282-000 | C | 1 | SCREW, CROSS-RECESS, PH |
| | CB1-9367-000 | B | 2 | DIAL O-RING |
| | CB1-9373-000 | C | 2 | EYEPIECE SLIDER |
| | CB3-0038-000 | C | 1 | DIAL, EYEPIECE ADJUSTING |
| | CB3-0130-000 | B | 2 | SHIELD, LIGHT (OLC) |
| | CB3-0143-000 | A | 1 | SEAL, TOP-CAP |
| | CB4-0038-000 | C | 3 | SCREW, CROSS-RECESS, PH |
| | CG2-0728-000 | C | 1 | EYEPIECE COVER UNIT |
| | XA1-7170-507 | F | 4 | SCREW, CROSS-RECESS, PH |

CANON DIGITAL CAMERA EOS-1D MARK II



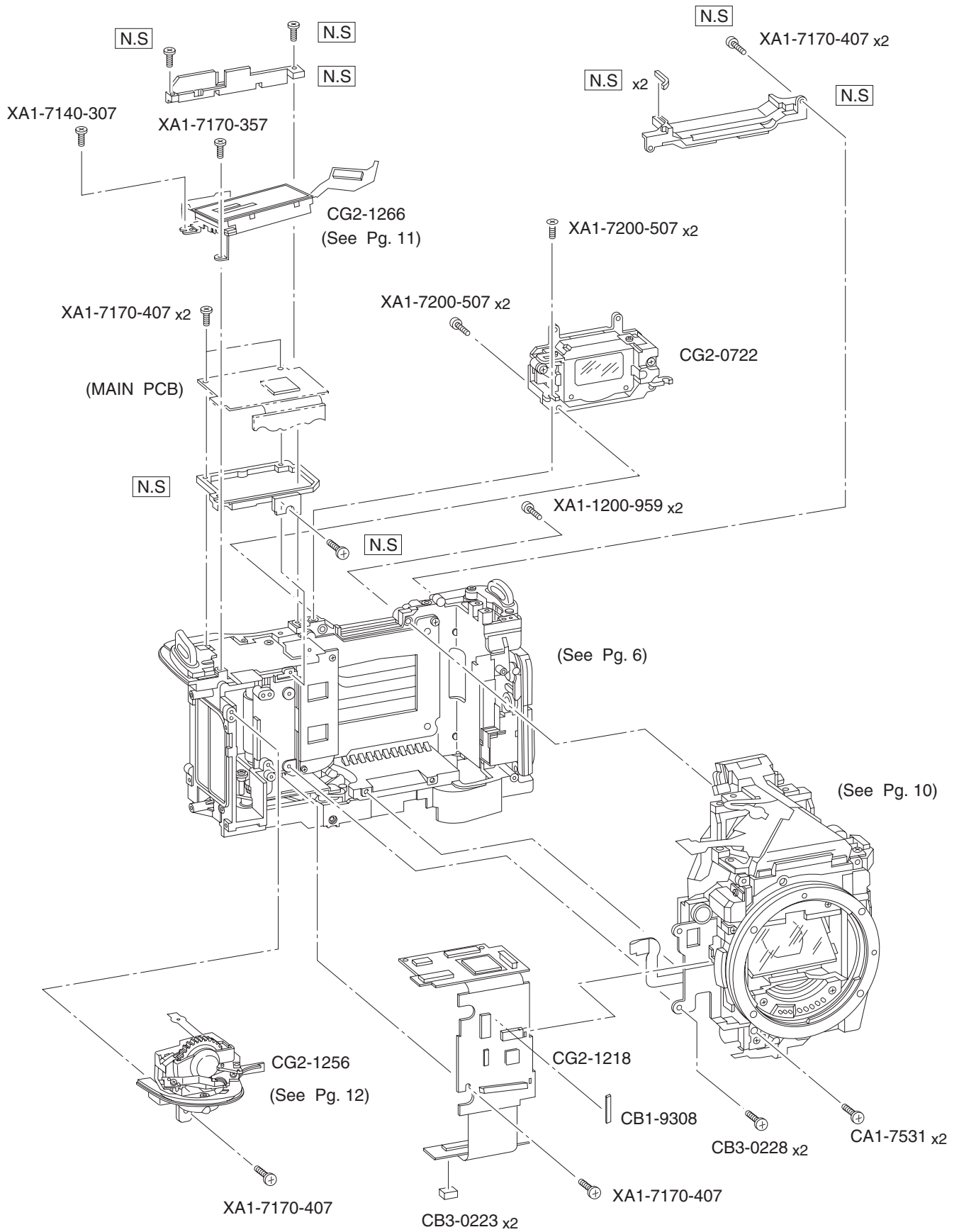
PARTS LIST

REF.NO.C12-6051

PG4

| NEW | PARTS No. | CLASS | QTY | DESCRIPTION |
|-----|--------------|-------|-----|-------------------------|
| | CB1-2678-000 | C | 4 | SCREW, CROSS-RECESS, PH |
| * | CB3-1401-000 | | 2 | SCREW, CROSS-RECESS, PH |
| | CB4-0038-000 | | | SCREW, CROSS-RECESS, PH |
| | CB4-0423-000 | C | 1 | COVER, BATTERY |
| * | CG2-1210-000 | C | 1 | FPC ASS'Y, CF-D |
| * | CG2-1211-000 | B | 1 | PCB ASS'Y, CF SLOT |
| * | CG2-1212-000 | B | 1 | PCB ASS'Y, C |
| * | CG2-1222-000 | C | 1 | PCB ASS'Y, SD SLOT |
| * | CG2-1246-000 | B | 1 | PCB ASS'Y, A2 |
| * | CG2-1247-000 | B | 1 | PCB ASS'Y, D |
| * | CG2-1254-000 | C | 1 | PCB ASS'Y, CF |
| * | CG2-1255-000 | B | 1 | PCB ASS'Y, DC/DC |
| * | CH1-8195-000 | C | 1 | FPC, A1-A2 |
| * | CY3-1454-000 | C | 1 | PLATE ASS'Y, BATTERY |
| | XA1-7170-207 | F | 3 | SCREW, CROSS-RECESS, PH |
| | XA1-7170-257 | F | 2 | SCREW, CROSS-RECESS, PH |
| | XA1-7170-357 | F | 3 | SCREW, CROSS-RECESS, PH |
| | XA1-7170-407 | F | 11 | SCREW, CROSS-RECESS, PH |
| | XA1-7170-507 | F | 2 | SCREW, CROSS-RECESS, PH |

CANON DIGITAL CAMERA EOS-1D MARK II



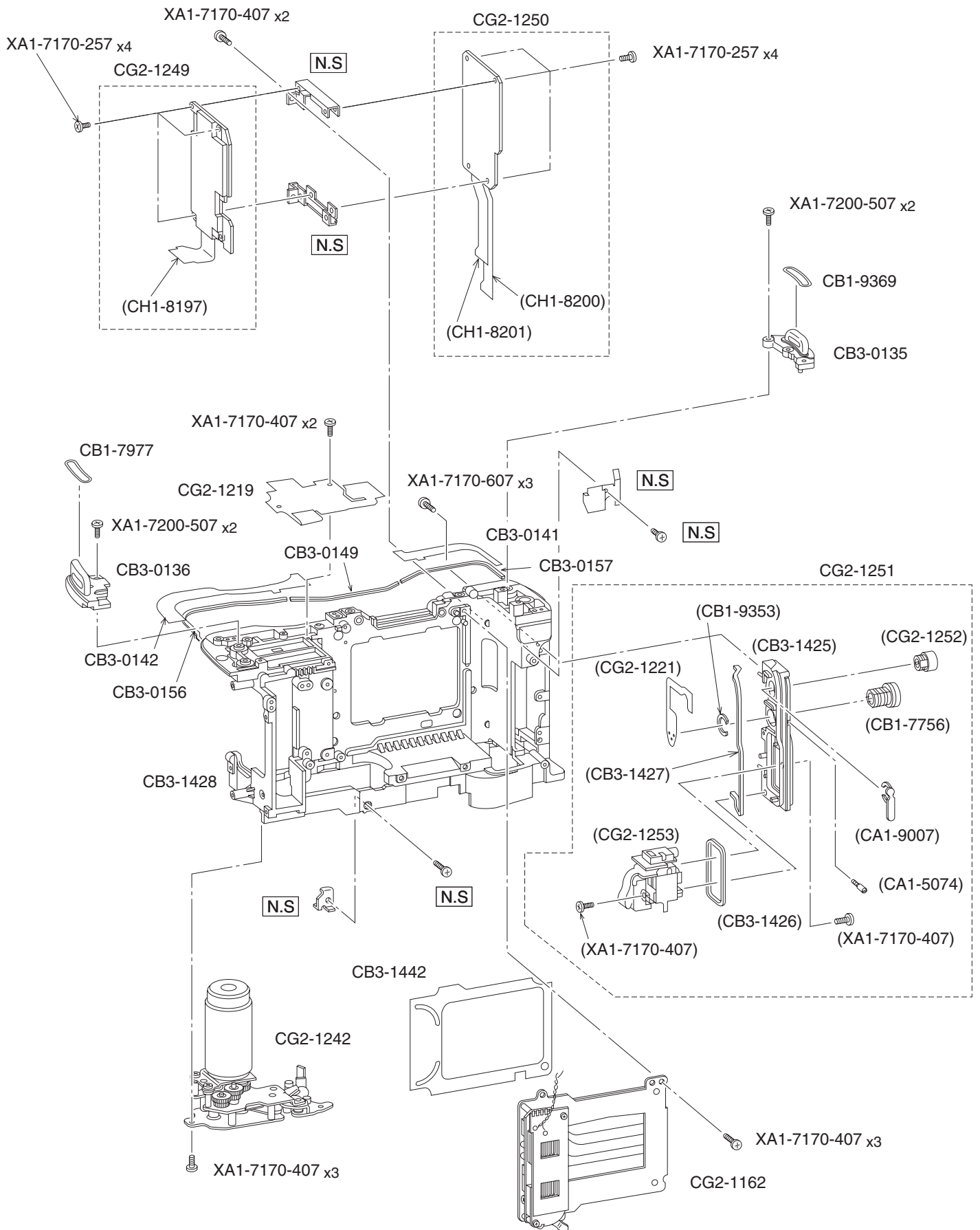
PARTS LIST

REF.NO.C12-6051

PG5

| NEW | PARTS No. | CLASS | QTY | DESCRIPTION |
|-----|--------------|-------|-----|-------------------------|
| | CA1-7531-000 | C | 2 | SCREW, CROSS-RECESS, PH |
| | CB3-0223-000 | C | 2 | CUSHION, MAIN PCB |
| | CB3-0228-000 | C | 2 | SCREW, CROSS-RECESS, PH |
| | CG2-1256-000 | B | 1 | DIAL UNIT |
| * | CG2-1218-000 | B | 1 | PCB ASS'Y, MAIN |
| * | CG2-1266-000 | B | 1 | LCD, EXTERNAL |
| | CG2-0722-000 | B | 1 | EYEPIECE UNIT |
| | XA1-1200-959 | F | 2 | SCREW, CROSS-RECESS, PH |
| | XA1-7140-307 | F | 1 | SCREW, CROSS-RECESS, PH |
| | XA1-7170-357 | F | 1 | SCREW, CROSS-RECESS, PH |
| | XA1-7200-507 | F | 4 | SCREW, CROSS-RECESS, PH |
| | XA1-7170-407 | F | 6 | SCREW, CROSS-RECESS, PH |
| | XA1-1170-509 | F | 2 | |

CANON DIGITAL CAMERA EOS-1D MARK II



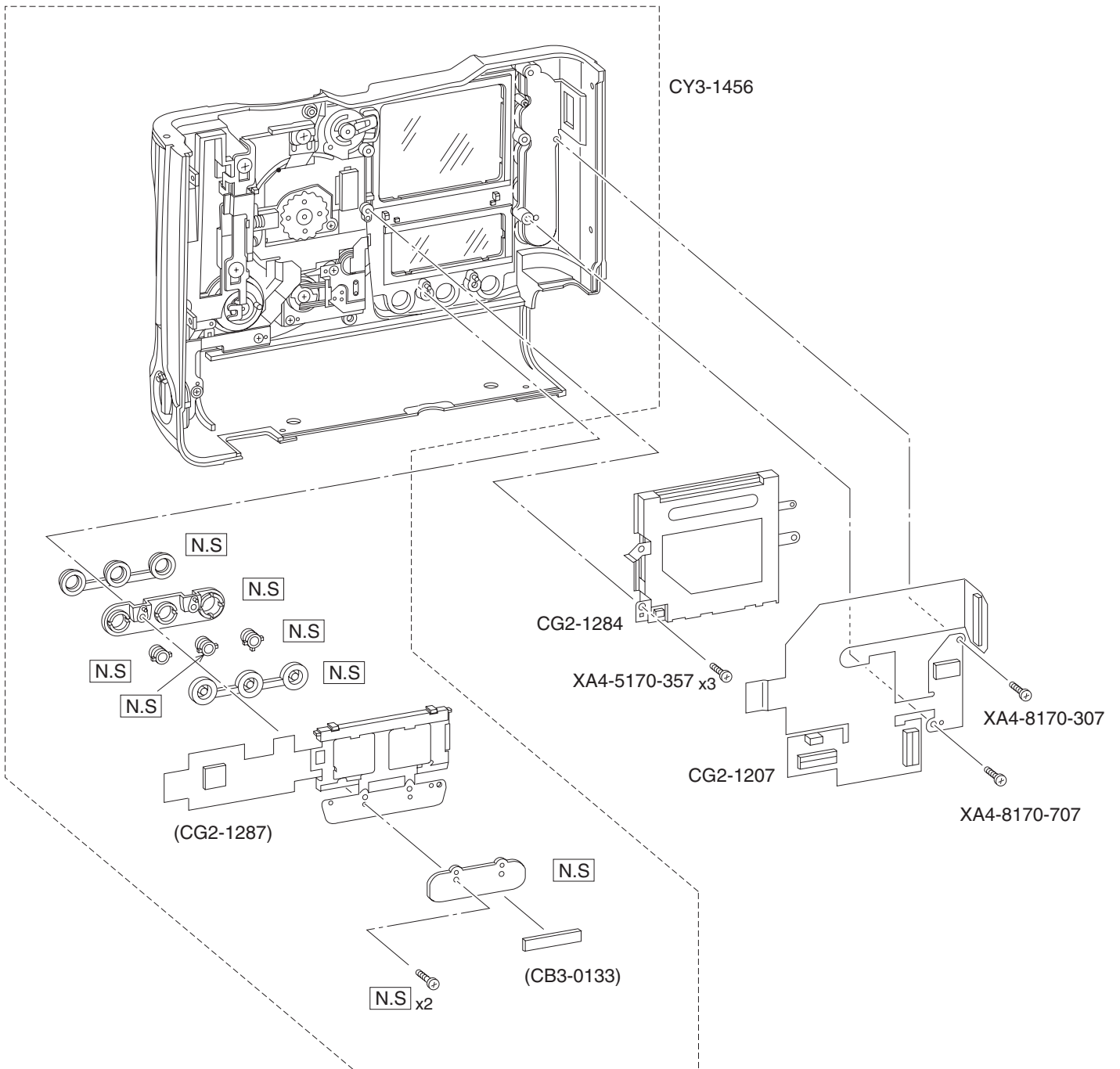
PARTS LIST

REF.NO.C12-6051

PG6

| NEW | PARTS No. | CLASS | QTY | DESCRIPTION |
|-----|--------------|-------|-----|---------------------------|
| | CA1-5074-000 | E | 1 | SCREW, STOPPER |
| | CA1-9007-000 | B | 1 | RING, PC RETAINER |
| | CA1-9402-000 | | 1 | SCREW, CROSS-RECESS, PH |
| | CB1-7756-000 | B | 1 | 3P-RECEPTACLE |
| | CB1-7977-000 | C | 1 | SEAL, STRAP R |
| | CB1-9353-000 | C | 1 | STOPPER, RT SOCKET |
| | CB1-9369-000 | C | 1 | SEAL, STRAP L |
| * | CB3-0135-000 | C | 1 | STRAP RING L |
| * | CB3-0136-000 | C | 1 | RING, STRAP (R) |
| | CB3-0141-000 | A | 1 | SEAL, TOP-TR |
| | CB3-0142-000 | A | 1 | SEAL, TOP-BACK |
| | CB3-0149-000 | A | 1 | SEAL, BACK BODY |
| | CB3-0156-000 | A | 1 | SEAL, BACK BODY-GR |
| | CB3-0157-000 | A | 1 | SEAL, BACK BODY-TR |
| * | CB3-1425-000 | B | 1 | HOLDER, TERMINAL |
| * | CB3-1426-000 | B | 1 | SEAL, 1394 USB CONNECTOR |
| * | CB3-1427-000 | B | 1 | SEAL, INTERFACE TERMINAL |
| * | CB3-1428-000 | A | 1 | BODY |
| * | CB3-1442-000 | C | 1 | TAPE, DUST |
| * | CG2-1162-000 | B | 1 | SHUTTER UNIT |
| * | CG2-1219-000 | B | 1 | PCB ASS'Y, MOTOR DRIVE |
| * | CG2-1221-000 | C | 1 | PCB ASS'Y, REMOTE |
| * | CG2-1242-000 | B | 1 | CHARGE UNIT |
| * | CG2-1249-000 | B | 1 | PCB ASS'Y, INTERFACE |
| * | CG2-1250-000 | B | 1 | PCB ASS'Y, TFT |
| * | CG2-1251-000 | B | 1 | TERMINAL ASS'Y, INTERFACE |
| * | CG2-1252-000 | B | 1 | PC TERMINAL UNIT |
| * | CG2-1253-000 | B | 1 | CONNECTOR ASS'Y, 1394 USB |
| * | CH1-8197-000 | B | 1 | FPC, RELAY IF -D |
| * | CH1-8200-000 | C | 1 | FPC, RELAY TFT - D |
| * | CH1-8201-000 | C | 1 | FPC, RELAY TFT -C |
| | XA1-7170-257 | F | 8 | SCREW, CROSS-RECESS, PH |
| | XA1-7170-407 | F | 12 | SCREW, CROSS-RECESS, PH |
| | XA1-7170-607 | F | 3 | SCREW, CROSS-RECESS, PH |
| | XA1-7200-507 | F | 4 | SCREW, CROSS-RECESS, PH |

CANON DIGITAL CAMERA EOS-1D MARK II



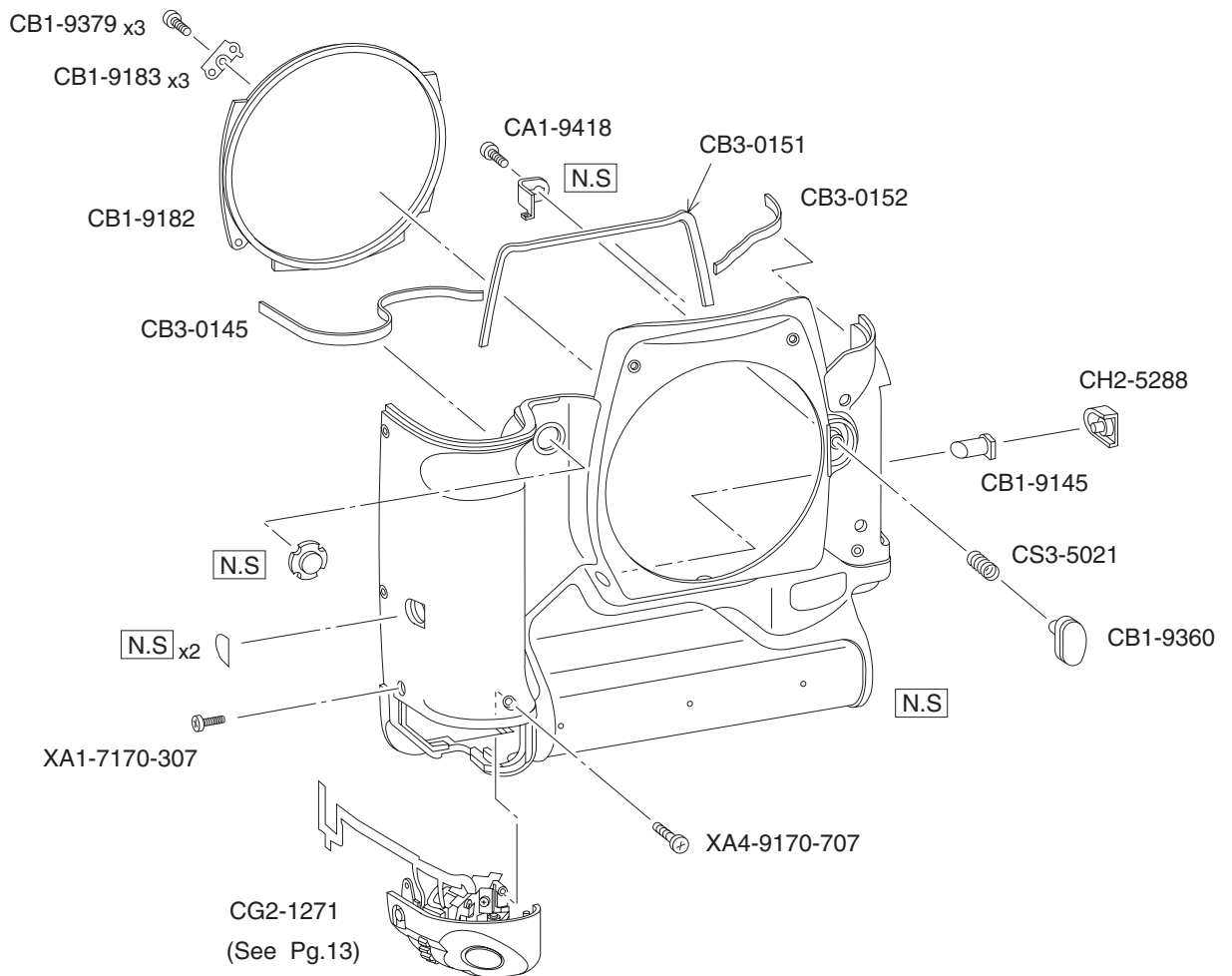
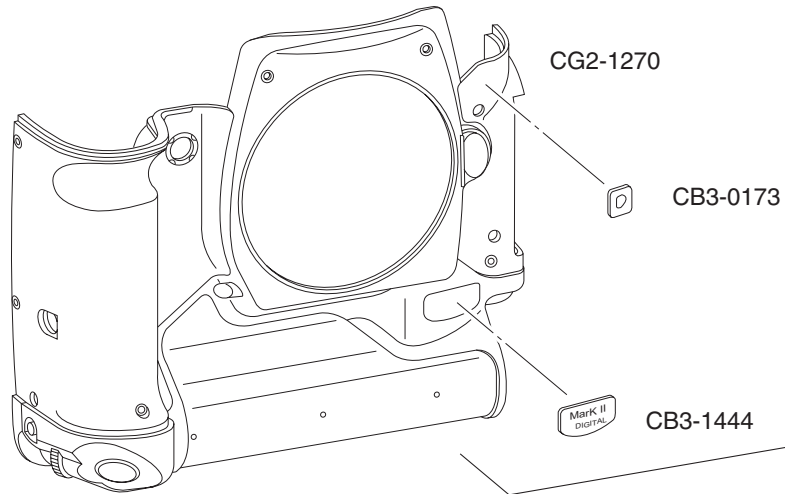
PARTS LIST

REF.NO.C12-6051

PG7

| NEW | PARTS No. | CLASS | QTY | DESCRIPTION |
|-----|--------------|-------|-----|-------------------------|
| * | CB3-0133-000 | C | 1 | SEAL, GASKET |
| * | CG2-1207-000 | C | 1 | LCD ASS'Y, BACK COVER |
| * | CG2-1284-000 | B | 1 | LCD ASS'Y, TFT |
| * | CG2-1287-000 | C | 1 | FPC, BACK MODULE |
| * | CY3-1456-000 | C | 1 | COVER ASS'Y, BACK |
| | XA4-5170-357 | F | 3 | SCREW, CROSS-RECESS, PH |

CANON DIGITAL CAMERA EOS-1D MARK II



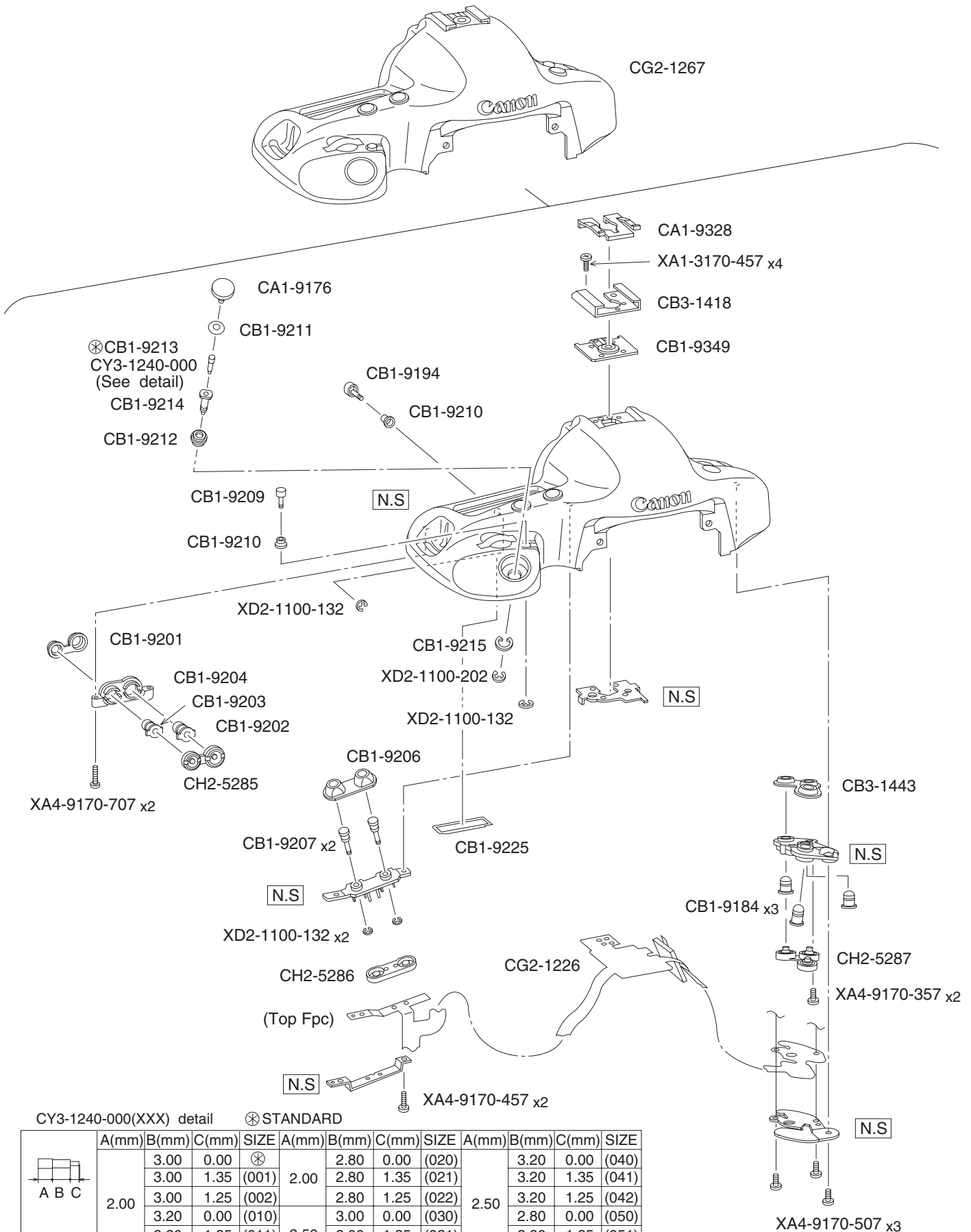
PARTS LIST

REF.NO.C12-6051

PG8

| NEW | PARTS No. | CLASS | QTY | DESCRIPTION |
|-----|--------------|-------|-----|-------------------------|
| | CA1-9418-000 | B | 1 | SCREW, CROSS-RECESS, PH |
| | CB1-9145-000 | C | 1 | BUTTON, PV |
| | CB1-9182-000 | C | 1 | RING, MOUNT |
| | CB1-9183-000 | C | 3 | PLATE, MOUNT RING |
| | CB1-9360-000 | C | 1 | BUTTON, UNLOCK |
| | CB1-9379-000 | F | 3 | SCREW, CROSS-RECESS, PH |
| | CB3-0145-000 | A | 1 | SEAL, FRONT-GR |
| | CB3-0151-000 | A | 1 | SEAL, FRONT-MID |
| | CB3-0152-000 | A | 1 | SEAL, FRONT-TR |
| | CB3-0173-000 | B | 1 | PLATE, NAME D1 |
| * | CB3-1444-000 | B | 1 | PLATE, NAME DIGITAL |
| * | CG2-1270-000 | B | 1 | FRONT COVER UNIT |
| * | CG2-1271-000 | C | 1 | DIAL ASS'Y, VERTICAL |
| | CH2-5288-000 | C | 1 | SWITCH, PV |
| | CS3-5021-000 | C | 1 | SPRING, UNLOCK BUTTON |
| | XA1-7170-307 | F | 1 | SCREW, CROSS-RECESS, PH |
| | XA4-9170-707 | F | 1 | SCREW, CROSS-RECESS, PH |

CANON DIGITAL CAMERA EOS-1D MARK II



CY3-1240-000(XXX) detail ⊗ STANDARD

| A B C | A(mm) | B(mm) | C(mm) | SIZE | A(mm) | B(mm) | C(mm) | SIZE | A(mm) | B(mm) | C(mm) | SIZE |
|-------|-------|-------|-------|------|-------|-------|-------|-------|-------|-------|-------|-------|
| | 2.00 | 3.00 | 0.00 | ⊗ | | 2.00 | 2.80 | 0.00 | (020) | 2.50 | 3.20 | 0.00 |
| 3.00 | | 1.35 | (001) | | 2.80 | | 1.35 | (021) | 3.20 | | 1.35 | (041) |
| 3.00 | | 1.25 | (002) | | 2.80 | | 1.25 | (022) | 3.20 | | 1.25 | (042) |
| 3.20 | | 0.00 | (010) | | 3.00 | 0.00 | (030) | 2.80 | 0.00 | | (050) | |
| 3.20 | | 1.35 | (011) | | 3.00 | 1.35 | (031) | 2.80 | 1.35 | | (051) | |
| | 3.20 | 1.25 | (012) | | 3.00 | 1.25 | (032) | | 2.80 | 1.25 | (052) | |

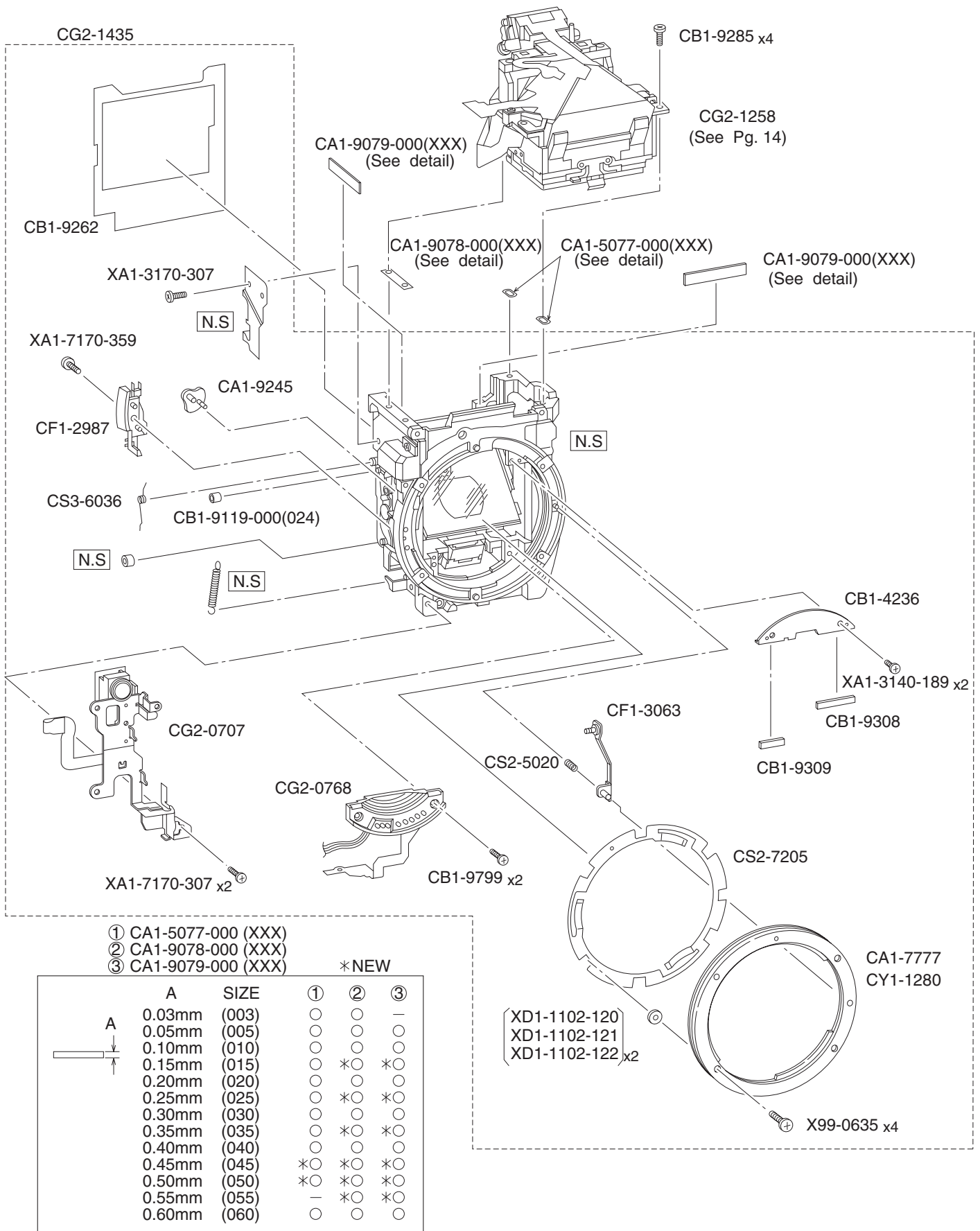
PARTS LIST

REF.NO.C12-6051

PG9

| NEW | PARTS No. | CLASS | QTY | DESCRIPTION |
|-----|--------------|-------|-----|-------------------------|
| | CA1-9176-000 | C | 1 | BUTTON, RELEASE |
| | CA1-9328-000 | C | 1 | SPRING, PLATE |
| | CB1-9184-000 | C | 3 | BUTTON, MODE |
| | CB1-9194-000 | C | 1 | BUTTON, ADD |
| | CB1-9201-000 | C | 1 | COVER, BACK SWITCH |
| | CB1-9202-000 | C | 1 | BUTTON, AEL |
| | CB1-9203-000 | C | 1 | BUTTON, FPSEL |
| | CB1-9204-000 | C | 1 | BASE, BACK SWITCH |
| | CB1-9206-000 | C | 1 | COVER, EL-C SWITCH |
| | CB1-9207-000 | C | 2 | BUTTON, EL-C |
| | CB1-9209-000 | C | 1 | BUTTON, FEL |
| | CB1-9210-000 | C | 2 | COVER, FEL SWITCH |
| | CB1-9211-000 | C | 1 | COVER, RELEASE |
| | CB1-9212-000 | C | 1 | GUIDE, RELEASE SHAFT |
| | CB1-9213-000 | C | 1 | PIN, RELEASE |
| | CB1-9214-000 | C | 1 | SHAFT, RELEASE |
| | CB1-9215-000 | C | 1 | RING, RETAINING |
| | CB1-9225-000 | C | 1 | SEAL, DIAL |
| | CB1-9349-000 | C | 1 | BASE, ACCESSORY SHOE |
| * | CB3-1418-000 | C | 1 | SHOE, ACCESSORY |
| * | CB3-1443-000 | C | 1 | COVER, MODE SWITCH |
| * | CG2-1226-000 | B | 1 | PCB ASS'Y, TOP |
| * | CG2-1267-000 | B | 1 | COVER ASS'Y, TOP |
| | CH2-5285-000 | C | 1 | SWITCH, BACK |
| | CH2-5286-000 | C | 1 | SWITCH, EL-C |
| | CH2-5287-000 | C | 1 | SWITCH, MODE |
| | CY3-1240-000 | C | 1 | SHAFT, ADJUSTING |
| | XA1-3170-457 | F | 4 | SCREW, CROSS-RECESS, PH |
| | XA4-9170-357 | F | 2 | SCREW, CROSS-RECESS, PH |
| | XA4-9170-457 | F | 2 | SCREW, CROSS-RECESS, PH |
| | XA4-9170-507 | F | 3 | SCREW, CROSS-RECESS, PH |
| | XA4-9170-707 | F | 2 | SCREW, CROSS-RECESS, PH |
| | XD2-1100-132 | F | 4 | WASHER, RETAINING 1.3MM |
| | XD2-1100-202 | F | 1 | WASHER, RETAINING |

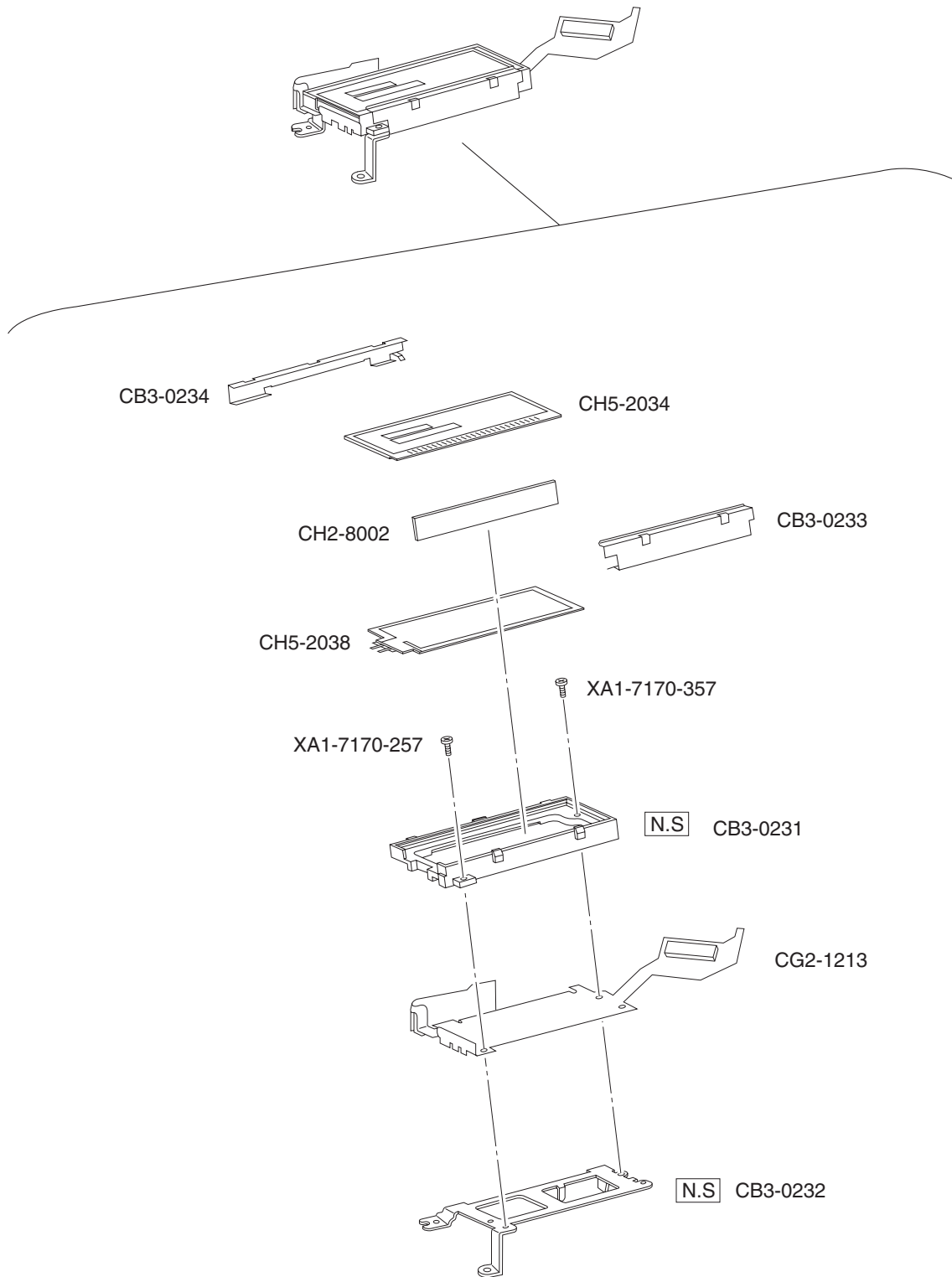
CANON DIGITAL CAMERA EOS-1D MARK II



PARTS LIST

| NEW | REF.NO.C12-6051 PARTS No. | CLASS | QTY | DESCRIPTION |
|-----|------------------------------|-------|-----|---------------------------|
| | CA1-5077-000 (XXX) | C | 1 | WASHER, FINDER FOCUSING |
| | CA1-7777-000 | C | 1 | MOUNT, BODY |
| | CA1-9078-000 (XXX) | C | 1 | SHIM, FINDER FOCUSING |
| | CA1-9079-000 (XXX) | C | 2 | PLATE, PARALLAX ADJUSTING |
| | CA1-9245-000 | E | 1 | LEVER, SENSOR |
| | CB1-4236-000 | C | 1 | PLATE, LIGHT SHIELD |
| | CB1-9119-000 (024) | C | 1 | COLLAR |
| | CB1-9262-000 | C | 1 | SHIELD, LIGHT |
| | CB1-9285-000 | C | 4 | SCREW, CROSS-RECESS, PH |
| | CB1-9308-000 | C | 1 | CUSHION, MIRROR 1 |
| | CB1-9309-000 | C | 1 | CUSHION, MIRROR 2 |
| | CB1-9799-000 | C | 2 | SCREW, CROSS-RECESS, PH |
| | CF1-2987-000 | C | 1 | SWITCH, LENS |
| | CF1-3063-000 | C | 1 | LOCK PIN UNIT |
| | CG2-0707-000 | B | 1 | WING PLATE UNIT |
| | CG2-0768-000 | B | 1 | CONTACT ASS'Y, MOUNT |
| * | CG2-1258-000 | B | 1 | PENTAPRISM UNIT |
| * | CG2-1435-000 | C | 1 | MIRROR BOX ASS'Y |
| | CS2-5020-000 | C | 1 | SPRING, COIL |
| | CS2-7205-000 | C | 1 | SPRING, MOUNT |
| | CS3-6036-000 | C | 1 | SPRING, MIRROR |
| | CY1-1280-000 | C | 1 | MOUNT, BODY (0.1mm under) |
| | X99-0635-000 | F | 4 | SCREW, CROSS-RECESS, PH |
| | XA1-3140-189 | F | 2 | SCREW, CROSS-RECESS, FCH |
| | XA1-3170-307 | F | 1 | SCREW, CROSS-RECESS, PH |
| | XA1-7170-307 | F | 2 | SCREW |
| | XA1-7170-359 | F | 1 | SCREW, CROSS-RECESS, PH |
| | XD1-1102-120 | F | 2 | WASHER |
| | XD1-1102-121 | F | 2 | WASHER |
| | XD1-1102-122 | F | 2 | WASHER |

CANON DIGITAL CAMERA EOS-1D MARK II



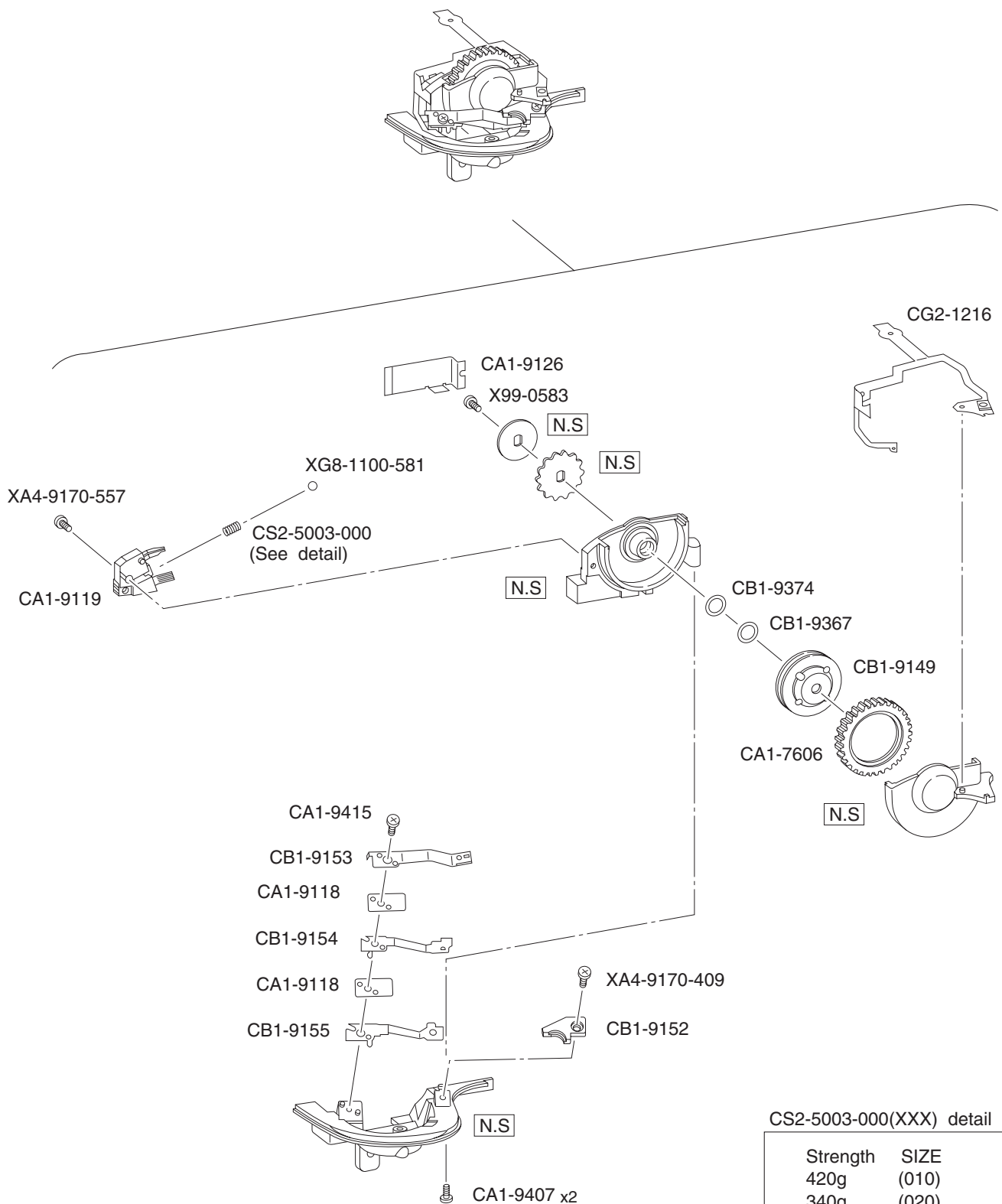
PARTS LIST

REF.NO.C12-6051

PG11

| NEW | PARTS No. | CLASS | QTY | DESCRIPTION |
|-----|--------------|-------|-----|-------------------------|
| | CB3-0233-000 | C | 1 | HOLDER, OLC 1 |
| | CB3-0234-000 | C | 1 | HOLDER, OLC 2 |
| * | CG2-1213-000 | B | 1 | PCB ASS'Y, DISPLAY |
| | CH2-8002-000 | C | 1 | CONNECTOR, OLC |
| * | CH5-2034-000 | B | 1 | LCD, EXTERNAL |
| * | CH5-2038-000 | B | 1 | ELECTRO LUMINESCENCE |
| | XA1-7170-257 | F | 1 | SCREW, CROSS-RECESS, PH |
| | XA1-7170-357 | F | 1 | SCREW, CROSS-RECESS, PH |

CANON DIGITAL CAMERA EOS-1D MARK II



CS2-5003-000(XXX) detail

| Strength | SIZE |
|------------|-------|
| 420g | (010) |
| 340g | (020) |
| * 300g | (030) |
| * STANDARD | |

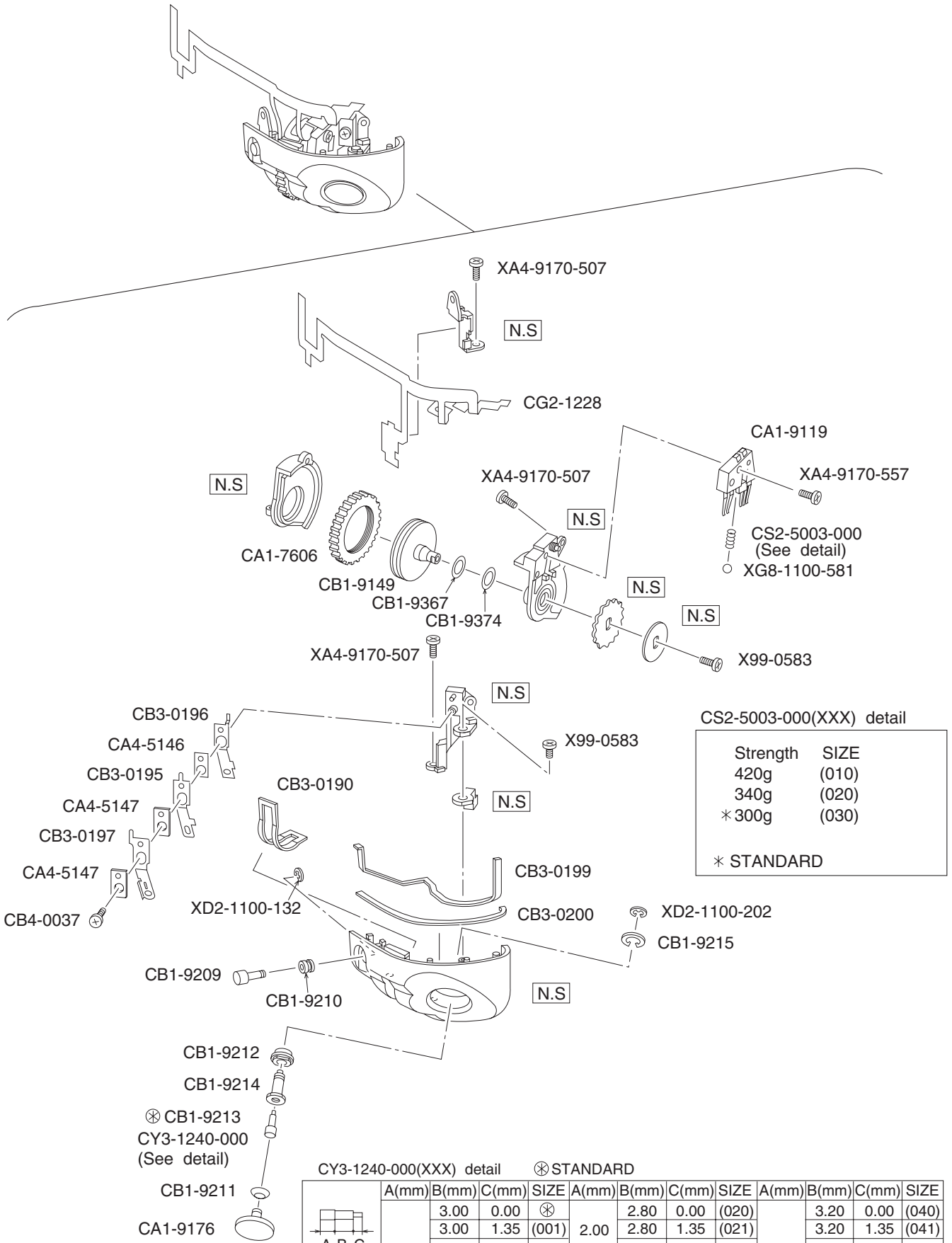
PARTS LIST

REF.NO.C12-6051

PG12

| NEW | PARTS No. | CLASS | QTY | DESCRIPTION |
|-----|--------------------|-------|-----|---------------------------|
| | CA1-7606-000 | C | 1 | RING, DIAL |
| | CA1-9118-000 | C | 2 | SPACER, CONTACT |
| | CA1-9119-000 | C | 1 | CONTACT, DIAL |
| | CA1-9126-000 | C | 1 | COVER, DIAL CONTACT |
| | CA1-9407-000 | C | 2 | SCREW, CROSS-RECESS, PH |
| | CA1-9415-000 | C | 1 | SCREW, CROSS-RECESS, PH |
| | CB1-9149-000 | C | 1 | DIAL, MODE CHANGE |
| | CB1-9152-000 | C | 1 | PLATE, RELEASE STOPPER |
| | CB1-9153-000 | C | 1 | CONTACT, RELEASE GROUND |
| | CB1-9154-000 | C | 1 | CONTACT, RELEASE SWITCH 1 |
| | CB1-9155-000 | C | 1 | CONTACT, RELEASE SWITCH 2 |
| | CB1-9367-000 | C | 1 | O RING |
| | CB1-9374-000 | C | 1 | SPACER, DIAL |
| * | CG2-1216-000 | C | 1 | PCB ASS'Y, AD SWITCH |
| | CS2-5003-000 (XXX) | C | 1 | SPRING, COIL |
| | X99-0583-000 | F | 1 | SCREW, CROSS-RECESS, PH |
| | XA4-9170-409 | F | 1 | SCREW, CROSS-RECESS, PH |
| | XA4-9170-557 | F | 1 | SCREW, CROSS-RECESS, PH |
| | XG8-1100-581 | F | 1 | BALL, STEEL |

CANON DIGITAL CAMERA EOS-1D MARK II



CS2-5003-000(XXX) detail

| Strength | SIZE |
|----------|-------|
| 420g | (010) |
| 340g | (020) |
| * 300g | (030) |

* STANDARD

CY3-1240-000(XXX) detail ⊗ STANDARD

| | A(mm) | B(mm) | C(mm) | SIZE | A(mm) | B(mm) | C(mm) | SIZE | A(mm) | B(mm) | C(mm) | SIZE |
|--|-------|-------|-------|-------|-------|-------|-------|-------|-------|-------|-------|-------|
| | 2.00 | 3.00 | 0.00 | ⊗ | 2.00 | 2.80 | 0.00 | (020) | 2.50 | 3.20 | 0.00 | (040) |
| | | 3.00 | 1.35 | (001) | | 2.80 | 1.35 | (021) | | 3.20 | 1.35 | (041) |
| | | 3.00 | 1.25 | (002) | | 2.80 | 1.25 | (022) | | 3.20 | 1.25 | (042) |
| | | 3.20 | 0.00 | (010) | | 3.00 | 0.00 | (030) | | 2.80 | 0.00 | (050) |
| | | 3.20 | 1.35 | (011) | | 3.00 | 1.35 | (031) | | 2.80 | 1.35 | (051) |
| | | 3.20 | 1.25 | (012) | | 3.00 | 1.25 | (032) | | 2.80 | 1.25 | (052) |

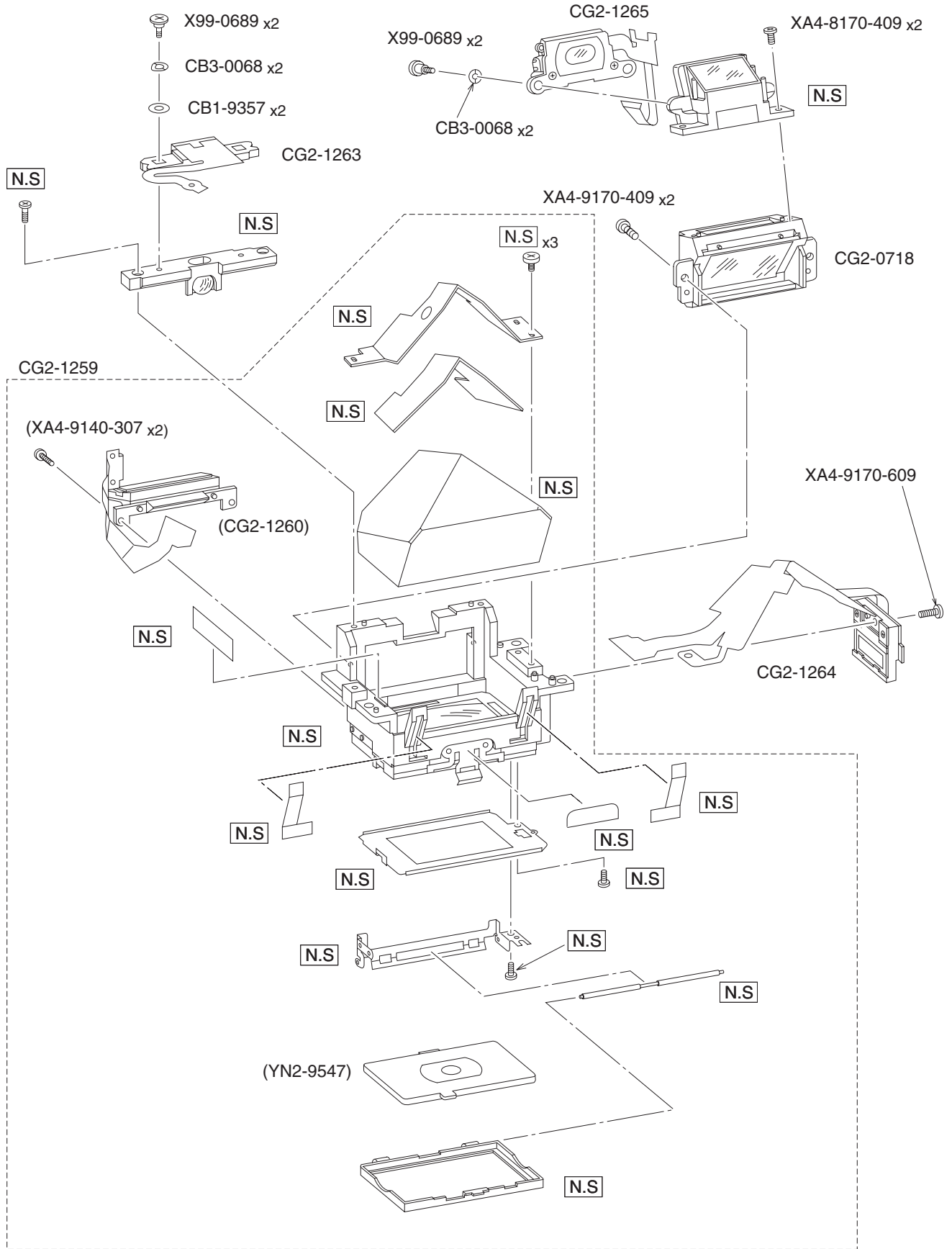
PARTS LIST

REF.NO.C12-6051

PG13

| NEW | PARTS No. | CLASS | QTY | DESCRIPTION |
|-----|--------------------|-------|-----|--------------------------|
| | CA1-7606-000 | C | 1 | RING, DIAL |
| | CA1-9119-000 | C | 1 | CONTACT, DIAL |
| | CA1-9176-000 | C | 1 | BUTTON, RELEASE |
| | CA4-5146-000 | D | 1 | SPACER, RELEASE 1 |
| | CA4-5147-000 | D | 2 | SPACER, RELEASE 2 |
| | CB1-9149-000 | C | 1 | DIAL, MODE CHANGE |
| | CB1-9209-000 | C | 1 | BUTTON, FEL |
| | CB1-9210-000 | C | 1 | COVER, FEL SWITCH |
| | CB1-9211-000 | C | 1 | COVER, RELEASE |
| | CB1-9212-000 | C | 1 | GUIDE, RELEASE SHAFT |
| | CB1-9213-000 | C | 1 | PIN, RELEASE |
| | CB1-9214-000 | C | 1 | SHAFT, RELEASE |
| | CB1-9215-000 | C | 1 | RING, RETAINING |
| | CB1-9367-000 | C | 1 | O RING |
| | CB1-9374-000 | C | 1 | SPACER, DIAL |
| | CB3-0190-000 | B | 1 | SEAL, V DIAL |
| | CB3-0195-000 | B | 1 | CONTACT, RELEASE SW1 |
| | CB3-0196-000 | B | 1 | CONTACT, RELEASE SW2 |
| | CB3-0197-000 | B | 1 | CONTACT, RELEASE GND |
| | CB3-0199-000 | B | 1 | SEAL, V CAP 1 |
| | CB3-0200-000 | B | 1 | SEAL, V CAP 2 |
| | CB4-0037-000 | F | 1 | SCREW, CROSS-RECESS, PH |
| * | CG2-1228-000 | B | 1 | PCB ASS'Y, VERTICAL DIAL |
| | CS2-5003-000 (XXX) | C | 1 | SPRING, COIL |
| | CY3-1240-000 | C | 1 | PIN, RELEASE |
| | X99-0583-000 | F | 1 | SCREW, CROSS-RECESS, PH |
| | XA4-9170-507 | F | 3 | SCREW, CROSS-RECESS, PH |
| | XA4-9170-557 | F | 1 | SCREW, CROSS-RECESS, PH |
| | XD2-1100-132 | F | 1 | WASHER, RETAINING 1.3MM |
| | XD2-1100-202 | F | 1 | WASHER, RETAINING |
| | XG8-1100-581 | F | 1 | BALL, STEEL |

CANON DIGITAL CAMERA EOS-1D MARK II



PARTS LIST

REF.NO.C12-6051

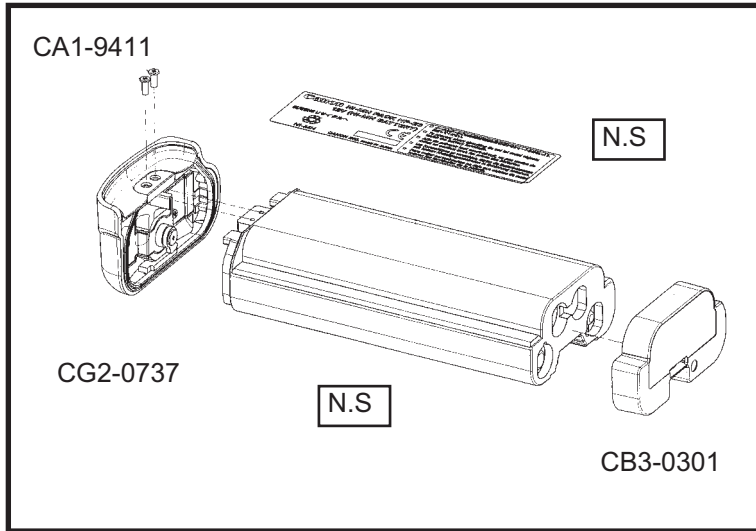
PG14

| NEW | PARTS No. | CLASS | QTY | DESCRIPTION |
|-----|--------------|-------|-----|--------------------------|
| | CB1-9357-000 | C | 2 | WASHER, SPC |
| | CB3-0068-000 | C | 4 | WASHER 2, SPC |
| | CG2-0718-000 | C | 1 | BASE ASS'Y, SI 1 |
| * | CG2-1259-000 | B | 1 | HOLDER ASS'Y, PENTAPRISM |
| * | CG2-1260-000 | B | 1 | HORIZONTAL LCD UNIT |
| * | CG2-1263-000 | B | 1 | SPC UNIT |
| * | CG2-1264-000 | B | 1 | VERTICAL LCD UNIT |
| * | CG2-1265-000 | D | 1 | IMPOSE ASS'Y, SUPER |
| | X99-0689-000 | F | 4 | SCREW, CROSS-RECESS, PH |
| | XA4-8170-409 | F | 2 | SCREW, CROSS-RECESS, PH |
| | XA4-9140-307 | F | 2 | SCREW, CROSS-RECESS, PH |
| | XA4-9170-409 | F | 2 | SCREW, CROSS-RECESS, PH |
| | XA4-9170-609 | F | 1 | SCREW, CROSS-RECESS, PH |
| | YN2-9547-000 | B | 1 | SCREEN, FOCUSING |

Accessories Section

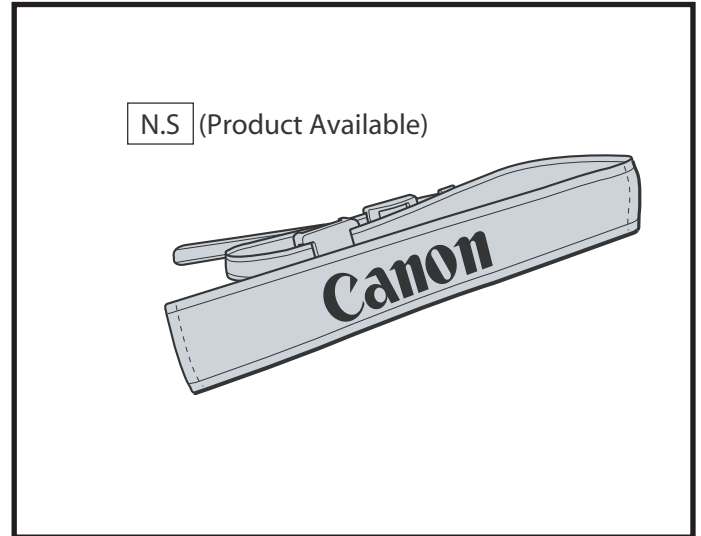
Ni-MH PACK NP-E3

REF.NO.C50-8041
C50-8042



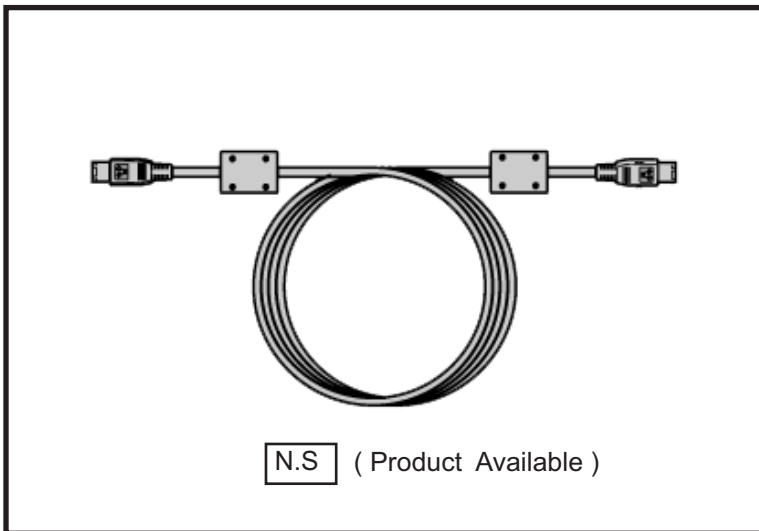
WIDE STRAP L5

REF.NO.C56-1734



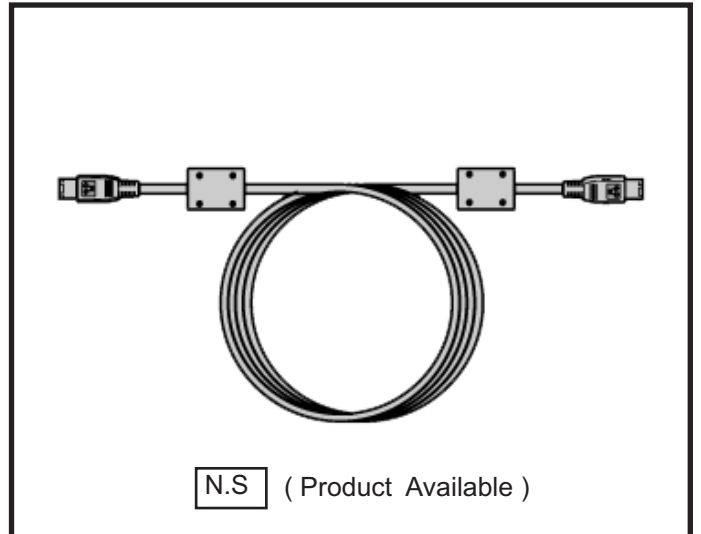
INTERFACE CABLE IFC-200D4

REF.NO.C50-8081

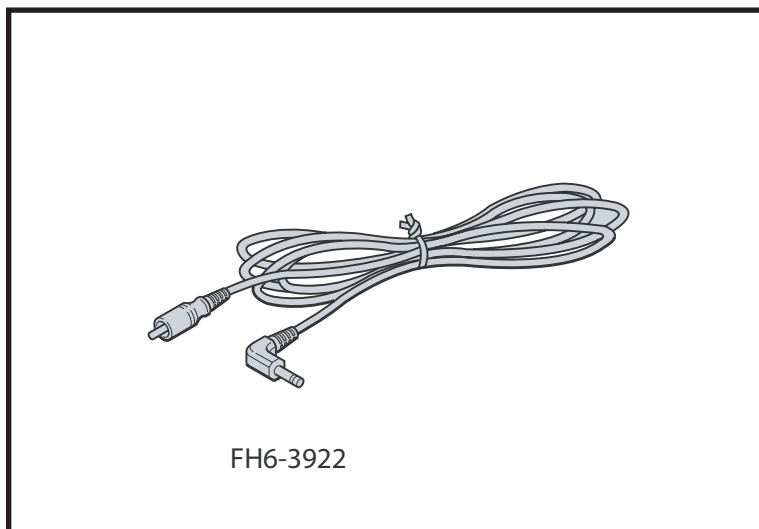


INTERFACE CABLE IFC-400PCU

REF.NO.C84-1245



VIDEO CABLE VC-100



CANON Ni-MH PACK NP-E3

REF.NO.C50-8041,C50-8042

PG15

| NEW | PARTS No. | CLASS | QTY | DESCRIPTION |
|-----|--------------|-------|-----|----------------------|
| | CA1-9411-000 | F | 2 | SCREW |
| | CB3-0301-000 | C | 1 | COVER, BAT TERMINAL |
| | CG2-0737-000 | C | 1 | COVER ASS'Y, BATTERY |

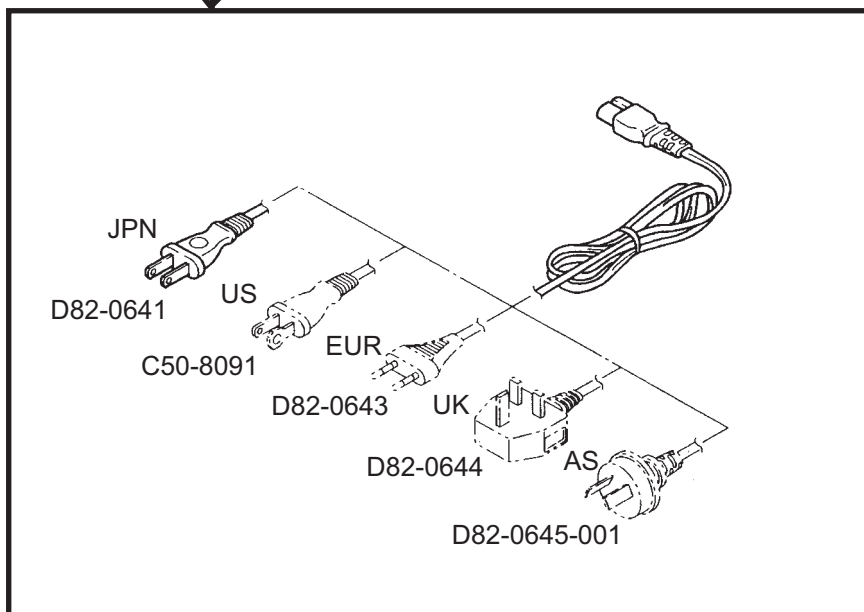
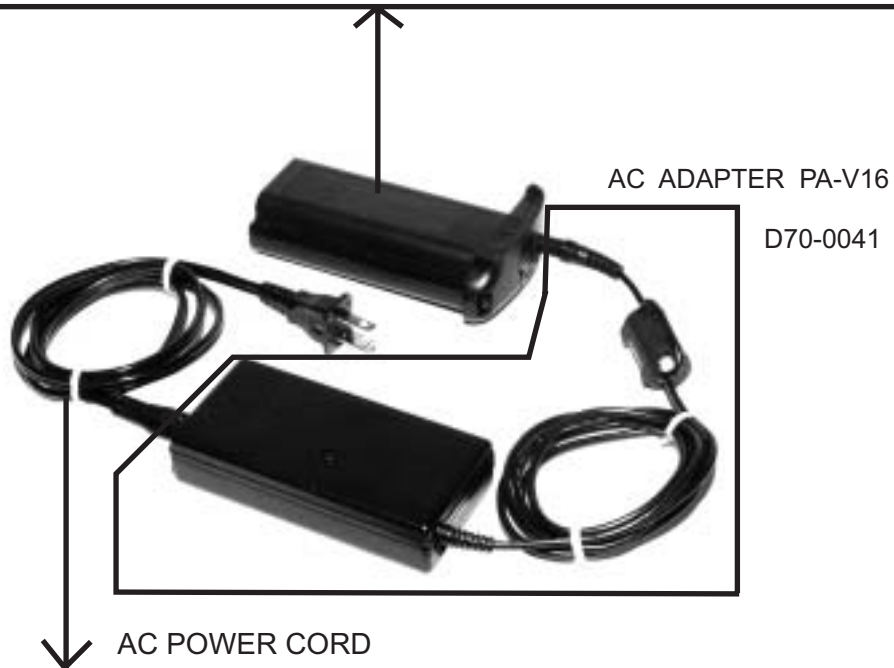
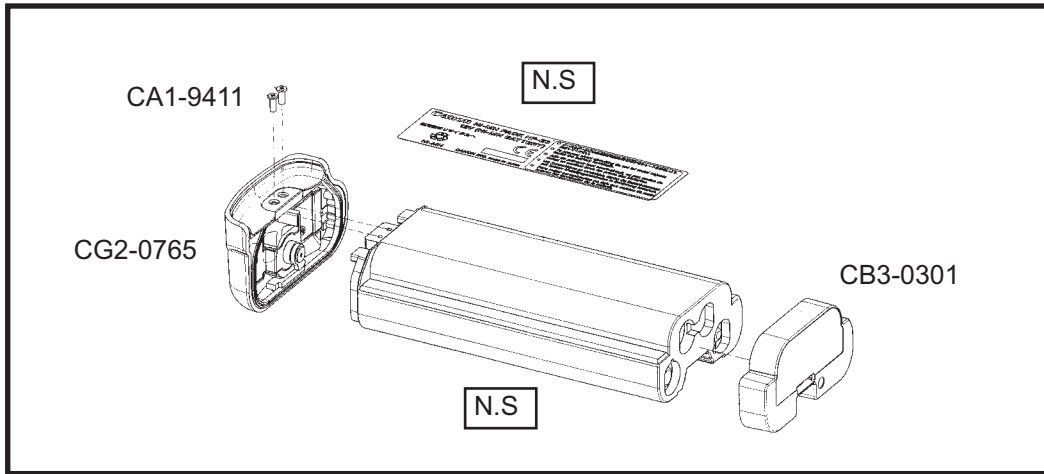
VIDEO CABLE VC100

| NEW | PARTS No. | CLASS | QTY | DESCRIPTION |
|-----|--------------|-------|-----|--------------------|
| | FH6-3922-000 | D | 1 | CABLE, VIDEO VC100 |

CANON DC COUPLER KIT DCK-E1

REF. NO. C50-8051

DC COUPLER DC-E1: C50-8051



CANON DC COUPLER KIT DCK-E1

REF.NO.C12-6021

PG16

| NEW | PARTS No. | CLASS | QTY | DESCRIPTION |
|-----|--------------|-------|-----|-------------------------|
| | CA1-9411-000 | F | 2 | SCREW, CROSS-RECESS, PH |
| | CB3-0301-000 | C | 1 | COVER, BAT TERMINAL |
| | CG2-0765-000 | C | 1 | COVER ASS'Y, BATTERY |
| | CG2-0766-000 | C | 1 | PACK ASS'Y, AC |
| | D70-0041-000 | C | 1 | AC ADAPTER PA-V16 |
| | D82-0641-000 | C | 1 | CORD, AC POWER (JPN) |
| | D82-0643-000 | C | 1 | CORD, AC POWER (EUR) |
| | D82-0644-000 | C | 1 | CORD, AC POWER (UK) |
| * | D82-0645-001 | C | 1 | CORD, AC POWER (AUST) |
| | C50-8091-000 | C | 1 | CORD, AC POWER (US) |

ELECTRIC PARTSLIST

REF.NO.C12-6051

PG17

| NEW | PARTS No. | CLASS | QTY | DESCRIPTION |
|-----|--------------|-------|-----|------------------|
| | Y11-3407-000 | | 1 | LEAD WIRE BLACK |
| | Y11-3413-000 | | 1 | LEAD WIRE RED |
| | Y11-3419-000 | | 1 | LEAD WIRE PINK |
| | Y11-3431-000 | | 1 | LEAD WIRE YELLOW |
| | Y11-3442-000 | | 1 | LEAD WIRE BLUE |
| | Y11-3708-000 | | 1 | LEAD WIRE BLACK |
| | Y11-3714-000 | | 1 | LEAD WIRE RED |
| | Y11-3743-000 | | 1 | LEAD WIRE BLUE |
| | Y11-3903-000 | | 1 | LEAD WIRE WHITE |
| | Y11-3909-000 | | 1 | LEAD WIRE BLACK |
| | Y11-3915-000 | | 1 | LEAD WIRE RED |
| | Y11-3921-000 | | 1 | LEAD WIRE PINK |
| | Y11-3927-000 | | 1 | LEAD WIRE ORANGE |
| | Y11-3933-000 | | 1 | LEAD WIRE YELLOW |
| | Y11-3960-000 | | 1 | LEAD WIRE GRAY |

INDEX OF PARTS LIST

REF.NO.C12-6051

| NEW | PARTS No. | Page | NEW | PARTS No. | Page |
|-----|--------------------|-------|-----|--------------------|---------|
| | CA1-5074-000 | 6 | | CB1-9196-000 | 3 |
| | CA1-5077-000 (XXX) | 10 | | CB1-9201-000 | 9 |
| | CA1-7531-000 | 5 | | CB1-9202-000 | 9 |
| | CA1-7606-000 | 12,13 | | CB1-9203-000 | 9 |
| | CA1-7777-000 | 10 | | CB1-9204-000 | 9 |
| | CA1-9007-000 | 6 | | CB1-9206-000 | 9 |
| | CA1-9078-000 (XXX) | 10 | | CB1-9207-000 | 9 |
| | CA1-9079-000 (XXX) | 10 | | CB1-9209-000 | 9,13 |
| | CA1-9118-000 | 12 | | CB1-9210-000 | 9,13 |
| | CA1-9119-000 | 12,13 | | CB1-9211-000 | 9,13 |
| | CA1-9126-000 | 12 | | CB1-9212-000 | 9,13 |
| | CA1-9176-000 | 9,13 | | CB1-9213-000 | 9,13 |
| | CA1-9245-000 | 10 | | CB1-9214-000 | 9,13 |
| | CA1-9328-000 | 9 | | CB1-9215-000 | 9,13 |
| | CA1-9402-000 | 3,6 | | CB1-9225-000 | 9 |
| | CA1-9407-000 | 12 | | CB1-9262-000 | 10 |
| | CA1-9415-000 | 12 | | CB1-9282-000 | 3 |
| | CA1-9418-000 | 8 | | CB1-9285-000 | 10 |
| | CA4-5146-000 | 13 | | CB1-9308-000 | 10 |
| | CA4-5147-000 | 13 | | CB1-9309-000 | 10 |
| | CB1-2678-000 | 4 | | CB1-9349-000 | 9 |
| | CB1-4236-000 | 10 | | CB1-9353-000 | 6 |
| | CB1-4255-000 | 3 | | CB1-9357-000 | 14 |
| | CB1-7756-000 | 6 | | CB1-9360-000 | 8 |
| | CB1-7977-000 | 6 | | CB1-9367-000 | 3,12,13 |
| | CB1-7982-000 | 3 | | CB1-9369-000 | 6 |
| | CB1-8581-000 | 3 | | CB1-9373-000 | 3 |
| | CB1-9119-000 (024) | 10 | | CB1-9374-000 | 12,13 |
| | CB1-9145-000 | 8 | | CB1-9379-000 | 8 |
| | CB1-9149-000 | 12,13 | | CB1-9799-000 | 10 |
| | CB1-9152-000 | 12 | | CB3-0038-000 | 3 |
| | CB1-9153-000 | 12 | | CB3-0060-000 (XXX) | 2 |
| | CB1-9154-000 | 12 | | CB3-0068-000 | 14 |
| | CB1-9155-000 | 12 | | CB3-0073-000 | 2 |
| | CB1-9168-000 | 3 | | CB3-0130-000 | 3 |
| | CB1-9182-000 | 8 | * | CB3-0133-000 | 7 |
| | CB1-9183-000 | 8 | * | CB3-0135-000 | 6 |
| | CB1-9184-000 | 9 | * | CB3-0136-000 | 6 |
| | CB1-9194-000 | 9 | | CB3-0141-000 | 6 |
| | CB1-9195-000 | 3 | | CB3-0142-000 | 6 |

INDEX OF PARTS LIST

REF.NO.C12-6051

| NEW | PARTS No. | Page | NEW | PARTS No. | Page |
|-----|--------------|------|-----|--------------|-------|
| | CB3-0143-000 | 3 | * | CB3-1438-000 | 1 |
| | CB3-0145-000 | 8 | * | CB3-1439-000 | 1 |
| | CB3-0146-000 | 1 | * | CB3-1440-000 | 1 |
| | CB3-0147-000 | 1 | * | CB3-1442-000 | 6 |
| | CB3-0149-000 | 6 | * | CB3-1443-000 | 9 |
| | CB3-0151-000 | 8 | * | CB3-1444-000 | 8 |
| | CB3-0152-000 | 8 | | CB4-0037-000 | 13 |
| | CB3-0156-000 | 6 | | CB4-0038-000 | 1,3,4 |
| | CB3-0157-000 | 6 | | CB4-0423-000 | 4 |
| | CB3-0164-000 | 2 | | CF1-2987-000 | 10 |
| | CB3-0165-000 | 2 | | CF1-3063-000 | 10 |
| | CB3-0166-000 | 2 | | CG2-0707-000 | 10 |
| | CB3-0173-000 | 8 | | CG2-0718-000 | 14 |
| | CB3-0184-000 | 1 | | CG2-0722-000 | 5 |
| | CB3-0190-000 | 13 | | CG2-0728-000 | 3 |
| | CB3-0195-000 | 13 | | CG2-0768-000 | 10 |
| | CB3-0196-000 | 13 | * | CG2-1162-000 | 6 |
| | CB3-0197-000 | 13 | * | CG2-1207-000 | 7 |
| | CB3-0199-000 | 13 | * | CG2-1210-000 | 4 |
| | CB3-0200-000 | 13 | * | CG2-1211-000 | 4 |
| | CB3-0203-000 | 1 | * | CG2-1212-000 | 4 |
| | CB3-0210-000 | 1 | * | CG2-1213-000 | 11 |
| | CB3-0223-000 | 5 | * | CG2-1216-000 | 12 |
| | CB3-0228-000 | 5 | * | CG2-1218-000 | 5 |
| | CB3-0233-000 | 11 | * | CG2-1219-000 | 6 |
| | CB3-0234-000 | 11 | * | CG2-1221-000 | 6 |
| * | CB3-1379-000 | 2 | * | CG2-1222-000 | 4 |
| * | CB3-1391-000 | 1 | * | CG2-1226-000 | 9 |
| * | CB3-1392-000 | 1 | * | CG2-1228-000 | 13 |
| * | CB3-1401-000 | 4 | * | CG2-1242-000 | 6 |
| * | CB3-1416-000 | 1 | * | CG2-1246-000 | 4 |
| * | CB3-1417-000 | 1 | * | CG2-1247-000 | 4 |
| * | CB3-1418-000 | 9 | * | CG2-1249-000 | 6 |
| * | CB3-1425-000 | 6 | * | CG2-1250-000 | 6 |
| * | CB3-1426-000 | 6 | * | CG2-1251-000 | 6 |
| * | CB3-1427-000 | 6 | * | CG2-1252-000 | 6 |
| * | CB3-1428-000 | 6 | * | CG2-1253-000 | 6 |
| * | CB3-1433-000 | 1 | * | CG2-1254-000 | 4 |
| * | CB3-1434-000 | 1 | * | CG2-1255-000 | 4 |
| * | CB3-1437-000 | 1 | | CG2-1256-000 | 5 |



DATA VERIFICATION KIT DVK-E2

REF.NO.C50-2431

PARTS CATALOG

DATA VERIFICATION KIT DVK-E2



CH9-1064-000



CH9-1065-000



CH9-1063-000



PARTS LIST

REF.NO.C50-2431

PG1

| NEW | PARTS No. | CLASS | QTY | DESCRIPTION |
|-----|--------------|-------|-----|--|
| * | CH9-1063-000 | C | 1 | CD-ROM, EOS DATA VERIFICATION V2.0 |
| * | CH9-1064-000 | C | 1 | CARD, SECURE MOBILE, SMART, HB28B032XMX1 |
| * | CH9-1065-000 | C | 1 | READER/WRITER, SECURE MOBILE CARD |